

The impact of wheat cultivar mixtures on virulence dynamics in *Zymoseptoria tritici* populations persists after interseason sexual reproduction

Carolina Orellana-Torrejon^{1,2}  | Tiphaine Vidal¹  | Sébastien Saint-Jean²  | Frédéric Suffert¹ 

¹Université Paris-Saclay, INRAE, UR BIOGER, Thiverval-Grignon, France

²Université Paris-Saclay, INRAE, AgroParisTech, UMR ECOSYS, Thiverval-Grignon, France

Correspondence

Frédéric Suffert, Université Paris-Saclay, INRAE, UR BIOGER, 78850 Thiverval-Grignon, France
Email: frederic.suffert@inrae.fr

Funding information

Fond de Soutien à l'Obtention Végétale, Grant/Award Number: FSOV PERSIST project; 2019-2022; French Ministry of Education and Research, Grant/Award Number: PhD fellowship MESR

Abstract

This study follows on from a previous study showing that binary mixtures of wheat cultivars affect the evolution of *Zymoseptoria tritici* populations within a field epidemic from the beginning (t1) to the end (t2) of a growing season. Here, we focused on the impact of interseason sexual reproduction on this evolution. We studied mixtures of susceptible and resistant cultivars (carrying *Stb16q*, a recently broken-down resistance gene) in proportions of 0.25, 0.5 and 0.75, and their pure stands. We determined the virulence status of 1440 ascospore-derived strains collected from each cultivar residue by phenotyping on seedlings. Virulence frequencies in the ascospore-derived population were lower in mixtures than in pure stands of the resistant cultivar, especially in the susceptible cultivar residues, as at t2, revealing that the impact of mixtures persisted until the next epidemic season (t3). Surprisingly, after sexual reproduction the avirulence frequencies on the resistant cultivar residues increased in mixtures where the proportion of the susceptible cultivar was higher. Our findings highlight two epidemiological processes: selection within the pathogen population between t1 and t2 driven by asexual cross-contamination between cultivars (previous study) and sexual crosses between avirulent and virulent strains between t2 and t3 driven by changes in the probabilities of physical encounters (this study). Mixtures therefore appear to be a promising strategy for the deployment of qualitative resistances, not only to limit the intensity of *Septoria tritici* blotch epidemics, but also to reduce the erosion of resistances by managing evolution of the pathogen population at a pluriannual scale.

KEYWORDS

cultivar mixtures, interseason, *Septoria* leaf blotch, sexual reproduction, *Stb16q*, wheat disease epidemics

1 | INTRODUCTION

One of the major pillars of crop protection against fungal diseases is the use of resistant cultivars with different sources of resistance. Qualitative resistance genes can confer full protection by preventing

pathogens from infecting, growing on or reproducing in host plant tissues (Dodds & Rathjen, 2010). However, the deployment of cultivars carrying the same genes at large spatial scales creates strong selective pressure on pathogen populations (McDonald & Linde, 2002). This pressure favours the emergence of virulent individuals capable

of infecting plants that were hitherto resistant and increases the frequency of such individuals (Niks et al., 2011). As the frequency of virulent strains increases, the resistance is eroded, and may then be considered to have broken down (Brown & Tellier, 2011). In this context, cereal farming systems are faced with two major concrete problems: the number of resistance genes known and/or available to breeders is limited, and it may take longer for a gene to be incorporated into new cultivars than for its resistance to be broken down. The current challenge is, therefore, to identify and/or optimize agricultural practices to extend the lifetime of cultivars; in other words, to reinforce the durability of their resistance to diseases (Johnson, 1984).

The trade-off between the efficacy and durability of resistance to plant pathogens has emerged as an important issue in recent years (Cowger & Brown, 2019; Mundt, 2018; Rimbaud et al., 2018). The efficacy of strategies for controlling fungal diseases is generally assessed at the scale of the cropping season, because this is the period of interest for a grower, for limiting yield losses due to disease. However, larger time scales should be considered, because a strategy can result in cumulative effects over a period of years, affecting its durability. Ecological studies have highlighted the importance of deciphering the relationship between the season and the off-season of the pathogen for epidemiological predictions (Numminen et al., 2019). An understanding of this relationship is even more crucial if an important step in the pathogen life cycle occurs predominantly between growing seasons. This is the case for example, for sexual reproduction, which helps to maintain the pathogen population between annual epidemics, while also driving evolutionary processes (Burdon & Laine, 2019). Epidemiological studies have widely highlighted the impact of sexual reproduction on pathogen survival between growing seasons (e.g., Yuen & Andersson, 2013, for *Phytophthora infestans*). Moreover, the intensity of sexual reproduction, the amount of primary inoculum at the beginning of the subsequent epidemic and the size of the pathogen population during this epidemic, for which disease severity is a proxy, have been shown to be correlated (e.g., Fortune et al., 2021 and Lo-Pelzer et al., 2009 for *Leptosphaeria maculans*; Cowger et al., 2002 and Suffert et al., 2018a for *Zymoseptoria tritici*). The recombination resulting from sexual reproduction also has a qualitative effect on the characteristics of the offspring population relative to the parental population. However, few experimental studies have investigated the impact of sexual reproduction on the frequency of strains displaying virulence against a specific gene within pathogen populations at field scale. Sexual recombination can modify the capacity of a progeny to infect the host on which its parental population originated, and the beneficial impact of cropping practices on the pathogen population during the preceding growing season, limiting the increase in virulence frequency, for example.

Z. tritici is the ascomycete fungus responsible for Septoria tritici blotch (STB), one of the most damaging wheat diseases in temperate countries (Fones & Gurr, 2015; Shaw & Royle, 1989). This pathosystem is a useful model for investigating these issues. *Z. tritici* displays both asexual reproduction, which predominates during the cropping season,

and sexual reproduction, which occurs mostly during the interseason period (Suffert et al., 2011). During the autumn the fungus survives on wheat residues, forming sexual fruiting bodies (perithecia) that release wind-dispersed ascospores, which constitute the main source of primary inoculum for the next epidemic season (Sanderson, 1972; Shaw & Royle, 1989). The genetic recombination resulting from sexual reproduction underlies the diversity of the fungal population and the adaptive dynamics of this species (Chen & McDonald, 1996; McDonald & Linde, 2002). As a means of controlling STB, breeders have incorporated *Stb16q*, one of the 21 major resistance genes identified to date (Brown et al., 2015; Ghaffary et al., 2012), into several cultivars, including cv. Cellule (Florimond Desprez). This cultivar was widely grown in France over the last decade (see figure 2 in Orellana-Torrejon et al., 2022a). A few years after the deployment of Cellule (2012), strains capable of overcoming *Stb16q* were detected, and such strains now comprise a substantial proportion of field populations. For example, these strains were estimated to have reached proportions of 0.13 and 0.14 in a trial in the Parisian basin in 2018 and 2019, respectively (Orellana-Torrejon et al., 2022a).

Growing different cultivars (cultivar mixtures) with complementary sources of resistance in the same field is a promising, well-documented practice for controlling epidemics of plant diseases, such as STB (Cowger & Mundt, 2002; Kristoffersen et al., 2021; Vidal et al., 2017). In a previous experimental study, we showed that wheat cultivar mixtures can have a significant impact on both the size and composition of *Z. tritici* populations relative to those on pure stands of the cultivar carrying the resistance gene (Cellule), over the course of the growing season (Orellana-Torrejon et al., 2022a). We established that, in cultivar mixtures, cross-contaminations may occur between cultivars during the cropping season, modifying the dynamics of the pathogen population on a particular cultivar relative to the pure stand. Taking the pure stand of Cellule as a reference, we established that cultivar mixtures could help to slow the dynamics of resistance breakdown.

Our goal in this study was to investigate the consequences of sexual reproduction on the impact of mixtures on the frequency of virulence against a broken-down STB resistance gene within the offspring population constituting the pool of primary inoculum for subsequent epidemics. The challenge was determining whether the evolution of pathogen populations in cultivar mixtures is limited to the scale of an annual epidemic or whether it may continue over a longer period.

2 | MATERIALS AND METHODS

2.1 | Overall strategy

In a field experiment divided into microplots, we characterized *Z. tritici* populations in binary mixtures with different proportions of a cultivar carrying the *Stb16q* resistance gene relative to pure stands. The populations studied consisted of strains sampled from diseased leaves at the end of an STB epidemic (t₂; see figure 1 in

Orellana-Torrejon et al., 2022a) and from the corresponding wheat residues after interseason sexual reproduction (t3). We characterized population size based on disease severity at t2 in the field and based on the amount of ascospore released from residues at t3 in laboratory conditions. Ascospore-derived strains were then phenotyped on both cultivars in greenhouse seedling assays to compare the aggressiveness and composition of populations based on estimates of the frequency of strains virulent against *Stb16q*.

2.2 | Design of the field experiment

This experiment was performed as part of the field trial described in full by Orellana-Torrejon et al. (2022a). This trial, conducted during the 2017/2018 season and repeated in 2018/2019, was designed to compare the annual dynamics of *Z. tritici* populations in pure stands and in binary mixtures of wheat cultivars from the early (t1) to the late (t2) stage of an epidemic (Figure 1a). It was divided into three blocks (a, b and c), each consisting of five microplots treated as follows: a pure stand of wheat cv. Apache (COA1), a pure stand of wheat cv. Cellule (C1A0) and three binary mixtures, with sowing proportions of Cellule (p_c) of 0.25, 0.5 and 0.75 (C1A3, C1A1 and C3A1, respectively). Apache (A) was chosen for its moderate susceptibility to STB and Cellule (C) because it carries the *Stb16q* resistance gene for which resistance breakdown has recently been reported.

2.3 | Management of wheat residues and sexual reproduction

Wheat plants were sampled after their complete natural desiccation, on 10 July 2018 and 16 July 2019 (Figure 1b), over a distance of 2×1 m in rows 3 and 4 at the eastern side of each microplot to prevent border effects (figure S1 in Orellana-Torrejon et al., 2022a). Before harvest, the plants were cut at a height 5 cm from the ground in each microplot (Figure 1c) and grouped by cultivar, based on the presence (Cellule) or absence (Apache) of awns on the ears. The resulting 24 bundles were stored in a dry place outside the field for 3 weeks. Meanwhile, the rest of the plants in the microplots were harvested mechanically on 17 July 2018 and 23 July 2019 (short cut at a height of 5 cm). On 2 August 2018 and 14 August 2019, each plant bundle was divided into five smaller bundles, hereafter referred to as sets of residues, which were deposited on the soil in their microplot of origin, at a location at which most of the other crop debris had been removed by raking. The residues were thus exposed to field conditions during the autumn to promote sexual reproduction between *Z. tritici* strains present on the senescent wheat tissues before harvest (Figure 1d). On 26 November 2018 and 10 December 2019, 50 g of decaying plant material (mostly stems and sheaths) was sampled from each set of residues and left to dry in laboratory conditions for 1 month.



FIGURE 1 *Zymoseptoria tritici* populations on wheat tissues at the late stage of the epidemic (t2) and after interseason sexual reproduction (t3). (a) Microplot at t2 (11 May 2018). (b) Microplot just before harvest (11 July 2018). (c) Manual collection of the wheat plants. (d) Wheat bundles, separated by cultivar, positioned on the ground of a microplot at t3, that is, after 4 months of exposure to weather conditions (26 November 2018). (e) Wetting of wheat residue fragments in laboratory conditions. (f) Petri dishes with potato dextrose agar placed upside down over wheat residue fragments to generate a discharge event and to collect ascospore-derived strains.

2.4 | Characterization of pathogen population size

The intensity of sexual reproduction was estimated by quantifying ascospore production by each set of residues of each cultivar with two simultaneous discharge events per treatment and per block, as described by Suffert et al. (2016). For each discharge event, 15 g of residues was cut into 2 cm fragments, soaked in water for 20 min (Figure 1e) and spread on dry filter paper in a box (24 × 36 cm) with the lid left half-open to decrease the relative humidity of the air. Eight Petri dishes (90 mm in diameter) filled with potato dextrose agar (PDA; 39 g/L) medium were then placed upside down 1 cm above the fragments (Figure 1f). The boxes were placed at 18°C overnight (15 h). The Petri dishes were then closed and incubated at the same temperature in the dark. Six days later, clustered yeast-like colonies resembling cream-coloured convoluted heaps were observed. We counted the number of these colonies by eye, and their identification as *Z. tritici* was checked under a microscope 4 days after ascospore discharge. It was assumed that each colony resulted from the germination of a single ascospore, and that clusters of colonies appeared just above mature pseudothecia from which several ascospores had been discharged (see figure 2c in Suffert et al., 2016). For each discharge event, we calculated a cumulative ascospore discharge index (ADI; ascospores/g), defined as the total number of ascospores discharged per gram of wheat residues. We then calculated the mean of six discharge events, ADI_v , for each cultivar v ($v \in [A; C]$) and for each treatment. An overall mean ascospore discharge index (\overline{ADI}) was also calculated at the whole-canopy scale for each treatment, by weighting ADI_v by the proportions of the cultivars (p_C for Cellule and $1 - p_C$ for Apache), as follows:

$$\overline{ADI} = p_C \times ADI_C + (1 - p_C) \times ADI_A \quad (1)$$

2.5 | Characterization of the composition of the pathogen population

2.5.1 | Sampling of *Z. tritici* strains from wheat residues

We sampled 30 ascospore-derived strains per cultivar and per microplot (total of 1440 strains, Table 1) from wheat residues. Where possible, the strains were selected from distant clusters of colonies, from as many different Petri dishes as possible, to reduce the probability of sampling the same genotype several times. Each strain was picked with a pin from a single colony and streaked onto

a Petri dish containing PDA, which was then incubated at 18°C for 5 days in the dark. This operation was repeated twice to obtain pure single-genotype strains. Each strain was finally scraped off the dish to obtain a substantial mass of blastospores (150 mg), which was deposited at the bottom of a cryotube and stored dry at -80°C.

2.5.2 | Population phenotyping

Phenotyping data for the *Z. tritici* population sampled at t2 (total of 1440 strains) were obtained and analysed in a previous study (Orellana-Torrejon et al., 2022a). We characterized the ascospore-derived strains sampled at t3 for virulence and aggressiveness on cv. Cellule and Apache seedlings according to the same protocol. This population was phenotyped by splitting it into 16 batches of strains tested in the greenhouse (14 batches of 93 strains and 2 batches of 69 strains). Each batch was balanced to ensure that it contained similar numbers of strains from each cultivar, treatment and block. Each strain was tested individually on two leaves of three 18-day-old seedlings grown in a pot (six replicates), for each cultivar. For each strain, inoculation was performed with blastospore suspensions (concentration: 10^5 to 5×10^5 spores/ml) and a cotton bud. All seedlings were then enclosed in transparent polyethylene bags moistened with distilled water for 72 h, to promote infection. The same eight virulent strains as used by Orellana-Torrejon et al. (2022a) were added to each batch as control strains, to ensure similar conditions for all batches.

Disease severity was assessed by eye 21 days postinoculation by determining the percentage of the inoculated leaf surface covered by pycnidia. A strain was considered pathogenic if pycnidia were observed on at least one of the six leaves of Apache. A pathogenic strain was considered virulent ("vir") against *Stb16q* if pycnidia were observed on at least one of the six leaves of Cellule, and avirulent otherwise. The frequency of virulent strains $f_{t3,v,vir}$ ($v \in [A; C]$) was calculated for each cultivar for each treatment.

We calculated the conditional aggressiveness (AGc; defined as the amount of disease "conditional on the individuals being infected" by McRoberts et al., 2003) of each strain sampled on cv. Apache and Cellule at the early (t1) and late (t2) epidemic stages (see Orellana-Torrejon et al., 2022a) and at t3 (after interseason sexual reproduction; current dataset). For a given strain, AGc was calculated if at least three of the six inoculated leaves on cv. Apache presented pycnidia.

| Year | Stage | COA1 | | C1A3 | | C1A1 | | C3A1 | | C1A0 | Total |
|------|-----------------|------|----|------|----|------|----|------|----|------|-------|
| | | A | C | A | C | A | C | A | C | | |
| 2018 | t3 ^a | 90 | 90 | 90 | 89 | 90 | 90 | 90 | 90 | 90 | 719 |
| 2019 | t3 ^b | 88 | 90 | 90 | 90 | 90 | 90 | 90 | 90 | 90 | 718 |

^aDischarged on 26 November 2018 from wheat residues collected in the field on 10 July 2018.

^bDischarged on 10 December 2019 from wheat residues collected in the field on 16 July 2019.

TABLE 1 Number of *Zymoseptoria tritici* ascospore-derived strains sampled on each cultivar ('A' for Apache, 'C' for Cellule) residues for each treatment (COA1, C1A3, C1A1, C3A1 and C1A0) after interseason sexual reproduction (t3) following the 2018 and 2019 epidemics, and phenotyped to determine virulence status

2.6 | Overall impact of cultivar mixtures on the dynamics of virulent subpopulations after sexual reproduction

We estimated the number of virulent ascospores discharged per gram of residues ($n_{t3,v, \text{vir}}$) for each cultivar v ($v \in [A; C]$) as a proxy for the size of the virulent subpopulation at $t3$. This variable was obtained by multiplying the ascospore discharge index (ADI_v) by the frequency of virulent strains ($f_{t3,v, \text{vir}}$) for each cultivar \times treatment \times block combination. The mean size of the virulent subpopulation at $t3$ ($\bar{n}_{t3,v, \text{vir}}$) was calculated at the whole-canopy scale for each treatment, as for the overall mean ascospore discharge index ($\overline{\text{ADI}}$, Equation 1).

2.7 | Statistical analysis

All data analyses were performed with R software (v. 4.0.2; R Core Team, 2012). Shapiro tests ('shapiro.test' function) showed that none of the variables studied were normally distributed. We therefore used various approaches to account for the nonnormality of the data, depending on the number of replicates available and the actual distribution of the data.

We assessed the effect of treatment on the size of the pathogen population at $t3$ (i.e., on the intensity of interseason sexual reproduction), by normalizing the ascospore discharge index (ADI_v) data with ordered quantile transformation (*bestNormalize* R package; 'orderNorm' function) and performing an analysis of variance (ANOVA; 'lm' function). The variance of the overall mean ascospore discharge index ($\overline{\text{ADI}}$) was estimated by calculating error propagation from the standard error of individual variables. We analysed the variation of the frequency of virulent strains and of the frequency of pathogenic strains during the overall wheat growing season ($t2$; $t3$) with a generalized linear model adapted to a binomial distribution of data ('glm' function).

The variance of the three variables described above was partitioned into sources attributable to the following factors and their interactions: cultivar of origin (A; C), treatment (C0A1; C1A3; C1A1; C3A1; C1A0), block (a; b; c) and year (2018; 2019). We also assessed the effect of period ($t2$; $t3$) on the frequency of virulent and pathogenic strains. We performed a Tukey HSD post hoc test for multiple pairwise comparisons on estimated marginal means (*emmeans* and *multcomp* R packages; 'emmeans' and 'cld' functions). The pertinence of the generalized linear models used was checked by calculating the ratio of the residual deviance to the number of degrees of freedom (<1).

The effect of treatments on the frequency of virulent strains ($f_{t3,v, \text{vir}}$) and on the frequency of pathogenic strains was assessed with a χ^2 test ('chisq.test' function) for contingency tables or with Fisher's exact test when the expected numbers were small. The effects of treatments on the number of virulent ascospores discharged per gram of residues for each cultivar ($n_{t3,v, \text{vir}}$; $v \in [A; C]$) and on the mean size of the virulent subpopulation calculated at the whole-canopy scale ($\bar{n}_{t3,v, \text{vir}}$) were assessed in a Kruskal–Wallis test (*agricolae*

R package, 'kruskal' function), selected as the appropriate test for one ANOVA factor with a nonnormal distribution. Similarly, the effect of period ($t1$; $t2$; $t3$) on conditional aggressiveness means (AGc) was assessed in a Kruskal–Wallis test. Bonferroni correction was used for pairwise comparisons, due to its high stringency.

3 | RESULTS

3.1 | Impact of cultivar mixtures on the overall size of pathogen populations on residues after sexual reproduction

The ascospore discharge index (ADI) was 10 times higher in 2018 than in 2019, regardless of cultivar or treatment ($p < 0.05$, ANOVA; Table S1, Figure 2). ADI depended on cultivar, without interaction with any other factor. The post hoc test revealed that ADI_A was significantly higher than ADI_C in pure stands, and in C3A1, in 2019, highlighting a higher intensity of sexual reproduction in Apache than in Cellule in these two sets of conditions. ADI was highly variable, particularly between blocks. Treatment had a significant effect on the intensity of sexual reproduction for two of the three blocks, but the overall effect, when all three blocks were considered together, was not significant. The effect of treatment on $\overline{\text{ADI}}$ was not significant, at least partly due to the high variability of ADI_A and ADI_C . In 2019, ADI_A tended to increase ($p = 0.038$, ANOVA) with the proportion of Cellule in the mixture (p_C ; Figure 2, Table S1).

3.2 | Impact of sexual reproduction on the composition of pathogen populations in cultivar mixtures

Three factors had a significant impact on the frequency of virulent strains: year, cultivar and treatment. The change in the frequency of virulent strains between $t2$ and $t3$ depended on cultivar (the generalized linear model highlighted a significant period \times cultivar interaction; Table S2).

3.2.1 | The impact of mixtures persists after sexual reproduction on both cultivars

The variation of the frequency of virulent strains ($f_{t3,A, \text{vir}}$ and $f_{t3,C, \text{vir}}$) with the proportion of Cellule in the mixture (p_C) followed the same trend as at the late epidemic stage ($t2$) for both cultivars (for more details, see Orellana-Torrejon et al., 2022a). After sexual reproduction ($t3$), the ascospore population derived from Apache contained a still significantly higher number of virulent strains in mixtures than in the pure stand of Apache, in both years (χ^2 test, $p < 0.001$; Figure 3a,b), and this number increased with p_C . At $t3$ on Cellule, the effect of treatment on the frequency of virulent strains relative to that in the pure stand of Cellule was not significant, except for C1A3 in 2018

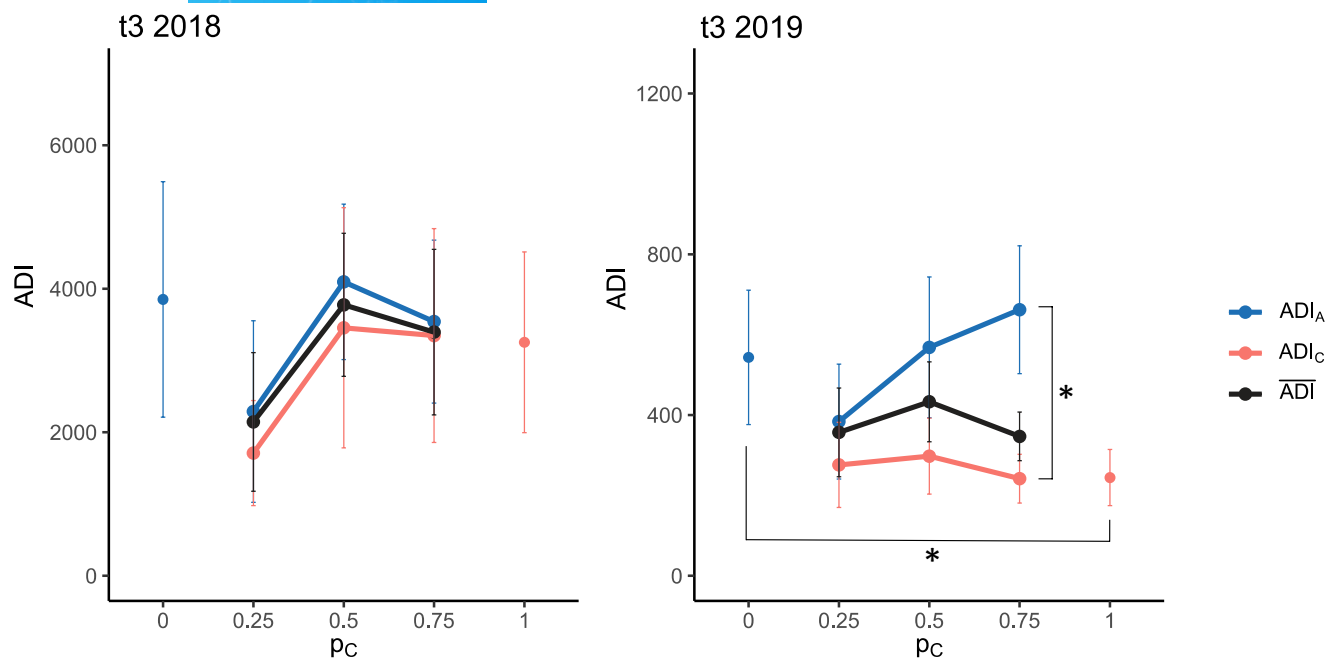


FIGURE 2 Mean ascospore discharge index, ADI_v (mean number of *Zymoseptoria tritici* ascospores collected from 1 g of residues of cultivar v), according to the proportion of cv. Cellule (p_C) in the canopy at t3, in 2018 and 2019. ADI_v was calculated for each cultivar, Apache (ADI_A , blue solid line) and Cellule (ADI_C , red solid line), based on six discharge events (two per block). The overall ascospore discharge index \overline{ADI} (black solid line) was calculated at the whole-canopy scale as the mean of ADI_A and ADI_C weighted by the proportions of the cultivars. Bars represent the standard error for the six discharge events. ADI_A and ADI_C were significantly different (*) only in 2019, in pure stands and C3A1 (analysis of variance followed by a Tukey HSD post hoc test). No other differences between treatments (p_C) were significant for ADI_A or ADI_C .

(χ^2 test; $p < 0.001$ in 2018 and $p = 0.208$ in 2019; Figure 3c,d). The proportion of Cellule (p_C) thus had little impact on the frequency of virulent strains on Cellule ($f_{t3,C,vir}$), as at t2. Moreover, the difference in the frequency of virulent strains between t2 and t3 was nonsignificant for almost all treatments and for both cultivars (generalized linear model after post hoc comparisons). We therefore conclude that the overall effect of mixtures persisted after sexual reproduction, on both cultivars.

3.2.2 | The impact of sexual reproduction ('period' effect) on the frequency of virulent strains is dependent on cultivar and treatment

On Apache, the effect of treatment seemed to be emphasized by an inflection in the proportion of Cellule in the mixture (p_C) at t3, with a substantial increase in the frequency of virulent strains (Figure 3a,b). The proportions involved were between $p_C = 0.25$ (C1A3) and $p_C = 0.5$ (C1A1) in 2018 (tripling $f_{t3,A,vir}$) and between $p_C = 0.5$ (C1A1) and $p_C = 0.75$ (C3A1) in 2019 (doubling $f_{t3,A,vir}$). These findings reflect particularly high levels of variation in the frequency of virulent strains after sexual reproduction around $p_C = 0.5$. In particular, fewer virulent strains were found on Cellule in mixtures (regardless of p_C) at t3 than at t2 (data from figure 5 in Orellana-Torrejón et al., 2022a) in both years, with differences in $f_{t3,C,vir}$ ranging from -2% to -13%; however, this difference was significant only

for C1A3 in 2018 (generalized linear model, $p = 0.020$; Figure 3c). This suggests that sexual reproduction led to an overall increase in the frequency of avirulent strains on Cellule in all mixtures (from $\times 1.2$ to $\times 7$).

3.3 | Overall impact of mixtures on the dynamics of the virulent subpopulation after sexual reproduction

The virulent subpopulation $n_{t3,v,vir}$ was about 10 times larger in 2018 than in 2019, whatever the treatment or cultivar (Figure 4a). After sexual reproduction on Apache, the virulent subpopulation ($n_{t3,A,vir}$) was significantly larger in two mixtures (C1A1 and C3A1) than in the corresponding pure stands in 2018 (Kruskal-Wallis, $p = 0.016$; Figure 4a). In 2019, the differences were not significant. The high variability of ADI, the quantitative variable used to calculate $n_{t3,v,vir}$ made it impossible to highlight other significant effects. Nevertheless, $n_{t3,A,vir}$ increased significantly with the proportion of Cellule (p_C) in 2018 and there was a similar trend in 2019 ($p = 0.016$ and $p = 0.077$, respectively; Figure 4a,b). By contrast, on Cellule, differences in $n_{t3,C,vir}$ between mixtures and the pure stand were not significant, in either year (Figure 4c,d). Finally, the size of the overall virulent subpopulation estimated at whole-canopy scale ($\overline{n}_{t3,vir}$) increased with the proportion of Cellule in the mixture, but this trend was not statistically significant (Figure 4e,f).

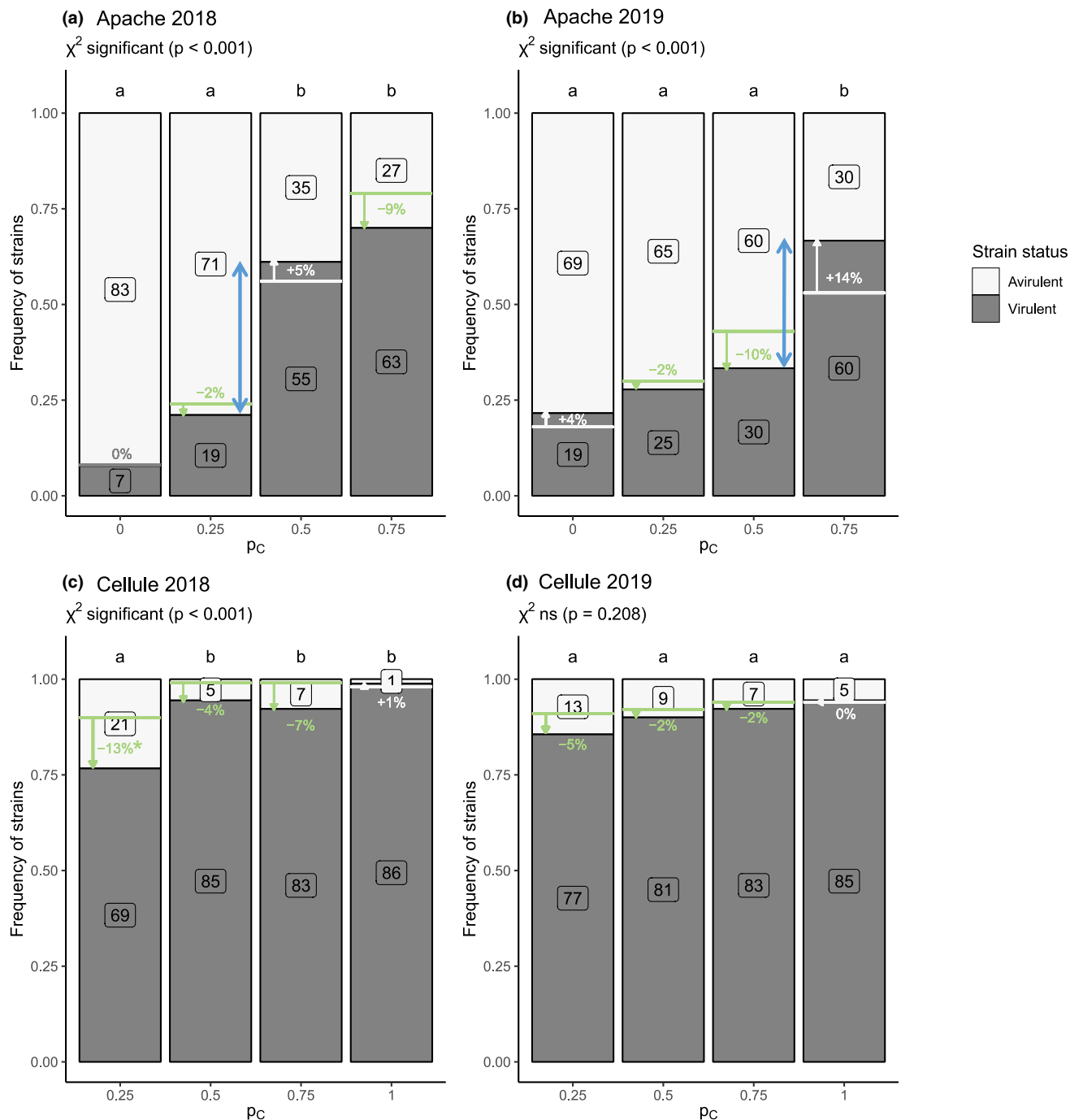


FIGURE 3 Frequency of *Zymoseptoria tritici* strains considered virulent (grey bars) against *Stb16q* and avirulent (white bars) among the populations collected (a, b) from cv. Apache residues ($f_{t3,A,vir}$) and (c, d) cv. Cellule residues ($f_{t3,C,vir}$) in pure stands ($p_C = 0$) and mixtures ($p_C = 0.25, 0.5$ and 0.75 for C1A3, C1A1 and C3A1, respectively) from t2 (wheat plants at the late epidemic stage) to t3 (wheat residues after interseason sexual reproduction) in 2018 and 2019. The number of virulent and avirulent strains are indicated in grey and white boxes. The effect of the treatment (pure stands and cultivar mixtures) on the number of virulent strains was assessed by performing a χ^2 test with Bonferroni correction for pairwise comparison (letters at the top of each bar). Changes in the number of pathogenic strains from t2 to t3 were calculated for each p_C and are represented with simple arrows (from white lines for increases or from green lines for decreases, based on the frequency data in figure 5 in Orellana-Torrejon et al., 2022a). Blue double arrows highlight the highest increase in the virulence frequency between cultivar proportions from t2 to t3. None of the differences in the number of virulent strains from t2 to t3 within treatments was significant, according to the generalized linear model, except for $p_C = 0.25$ on cellule in 2018 ($*p < 0.05$).

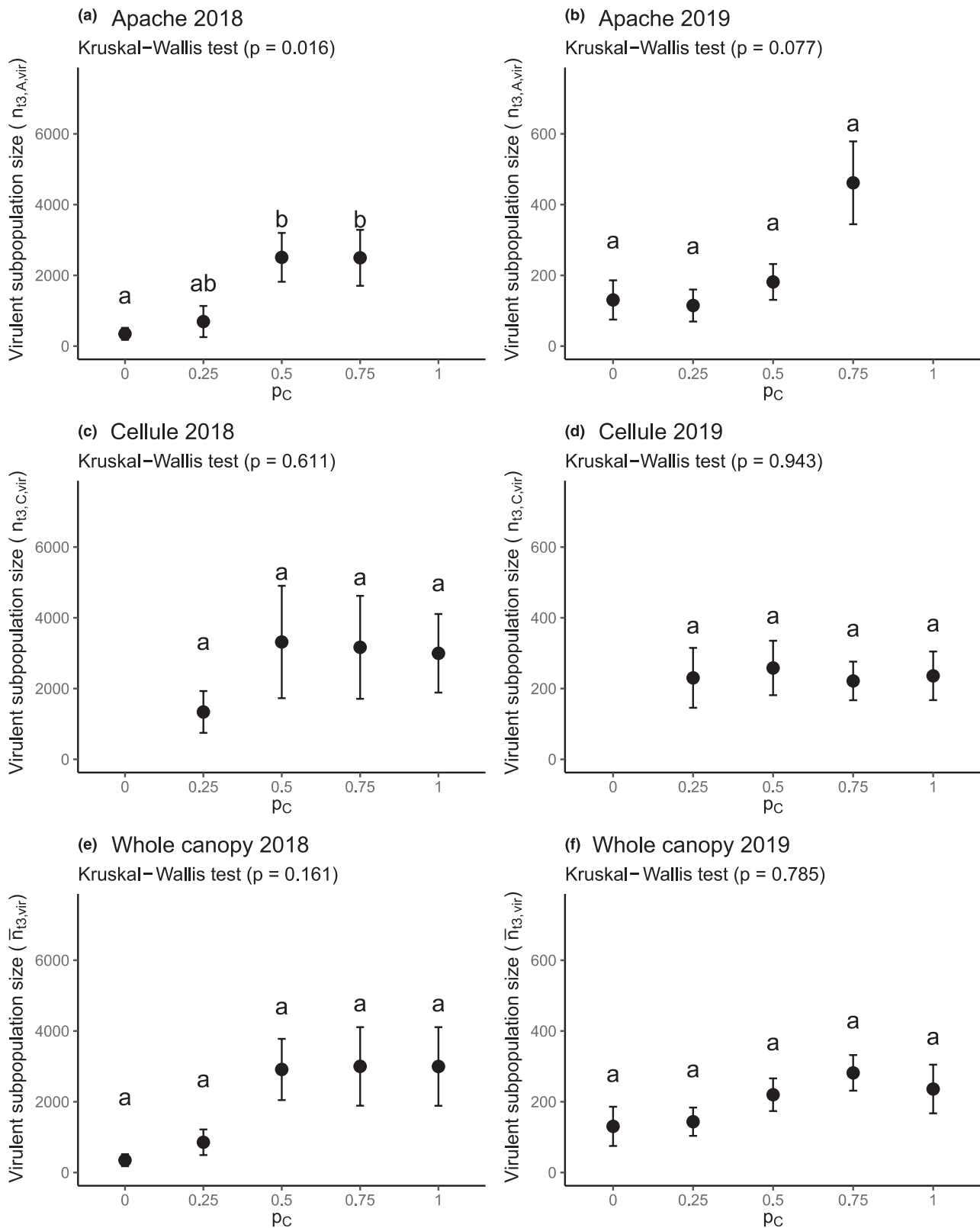


FIGURE 4 Impact of mixtures on the size of the *Zymoseptoria tritici* virulent subpopulation after sexual reproduction (t3) on wheat residues from each cultivar and at the whole-canopy scale. (a, b) Proxy for the size of the virulent subpopulation sampled from residues of cv. Apache ($n_{t3,A,vir}$; number of virulent strains collected from 1 g of residues; black dots) and (c, d) from residues of cv. Cellule ($n_{t3,C,vir}$), according to the proportion of Cellule (p_c) in 2018 and 2019. (e, f) Proxy for the size of the virulent subpopulation calculated at the whole-canopy scale ($\bar{n}_{t3,vir}$). Bars represent the standard error for six replicates for $n_{t3,A,vir}$ and $n_{t3,C,vir}$ and three replicates for $\bar{n}_{t3,vir}$. Error propagation was taken into account. The effect of treatment (pure stand or cultivar mixture) on the mean size of the virulent subpopulation was assessed by performing a Kruskal-Wallis test with Bonferroni correction for pairwise comparison.

3.4 | Pathogenicity and aggressiveness of pathogen populations after sexual reproduction

As at t2, most of the ascospore-derived strains sampled from Apache and Cellule residues (>95%) were pathogenic, causing sporulating lesions on Apache (Figure S1). The proportion of Cellule in the mixture (p_c) had no significant effect on the frequency of pathogenic strains on either cultivar, except for C3A1 on Apache in 2019 and on Cellule in 2018 where it was lower (Fisher's test, $p = 0.016$ and $p = 0.008$, respectively; Figure S1). The difference in the frequency of pathogenic strains between t2 and t3 was not significant overall and depended on treatment ($p = 0.015$ for the interaction between period and treatment; Table S2). The post hoc comparisons showed that the differences were significant in five cases, with a number of pathogenic strains lower (C1A3 on Apache in 2018 and C3A1 on Cellule in 2018 and 2019) and higher (COA1 on Apache in 2018 and C1A3 on Cellule in 2019) in t3 than in t2.

The conditional aggressiveness (AGc) of the *Z. tritici* populations sampled at t1, t2 and t3, expressed as the mean percentage sporulating leaf area on cv. Apache in conditions in which at least three of the six inoculated leaves presented pycnidia, was calculated for a total of 3563 strains. AGc decreased significantly after sexual reproduction in 2018, and a similar trend was observed in 2019 (Kruskal–Wallis,

$p < 0.01$ and $p = 0.08$, respectively; Figure 5). AGc was 18.4% for strains collected at t3, versus 20.4% at t1 and 22.0% at t2 in 2018, and 12.4% for strains collected at t3, versus 16.0% at t1 and 14.4% at t2 in 2019. The differences observed between t1 and t2 were not significant in either year.

4 | DISCUSSION

This study follows on from a previous study (Orellana-Torrejón et al., 2022a), in which we highlighted the impact of mixtures of cultivars between the early (t1) and late (t2) stages of the wheat growing season on both the overall size of *Z. tritici* populations (with disease severity as a proxy) and their composition (frequency of virulent strains and size of the virulent subpopulation). We show here that sexual reproduction during the interseason period (t3) on wheat residues does not greatly affect the beneficial impact of mixtures over the epidemic season; the selective dynamics displayed during the growing season persisted in the offspring populations. The frequency of virulent strains derived from ascospores remained lower in mixtures than in pure stands of Cellule (hereafter referred to as the resistant cultivar), indicating that mixtures effectively limited the transmission of virulence against *Stb16q* resistance into the

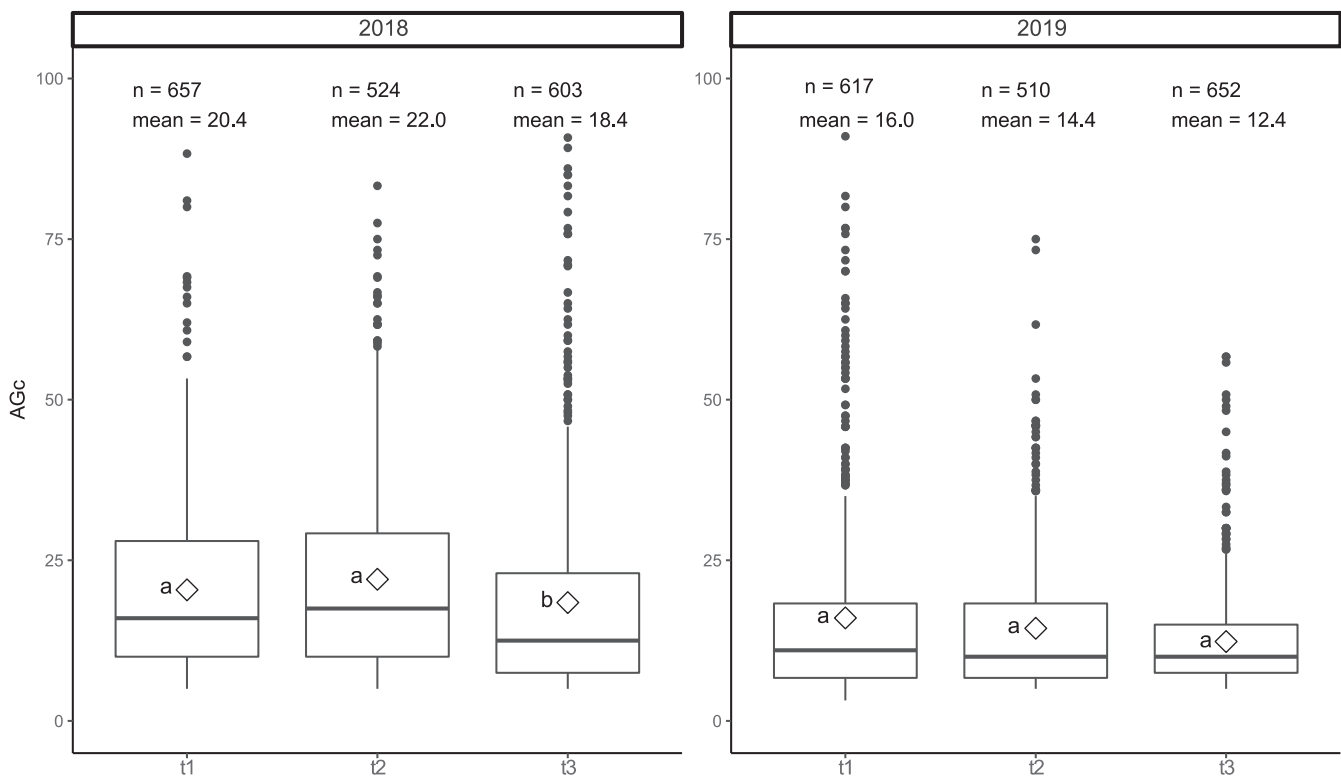


FIGURE 5 Comparison of the conditional aggressiveness (AGc) of 3563 strains collected on Apache and Cellule residues in the field trial, by sampling period in 2018 and 2019: early epidemic stage (t1), late epidemic stage (t2) and after interseason sexual reproduction (t3). AGc was calculated as the mean percentage of the leaf area displaying sporulation on cv. Apache in conditions in which at least three of the six inoculated leaves presented pycnidia. For each sampling period, the number of strains (n), the mean (white diamond) and the median (horizontal bar) are indicated. The effect of the sampling period was assessed in a Kruskal–Wallis test ($p < 0.01$ and $p = 0.08$ in 2018 and 2019, respectively).

following epidemic season. Mixtures had no detectable impact on the size of offspring populations relative to pure stands, contrary to expectations of a possible decrease in the amount of primary inoculum based on the lower disease severity observed at t2. We discuss here, in greater detail, the novelty and promise of this study, together with its limitations, by distinguishing the effects on each cultivar and proposing explanatory mechanisms.

One of our key findings concerns the impact of sexual reproduction on the composition of the offspring population and the persistence of the overall mixture effect, with differences between cultivars. After interseason sexual reproduction, the increase in the proportion of the susceptible cultivar in the mixture was accompanied by a decrease in the frequency of virulent strains derived from ascospores on the susceptible cultivar (treatment effect; Figure 3a,b), consistent with the results obtained late in the growing season (t2) (Orellana-Torrejon et al., 2022a); and by an increase in the frequency of avirulent strains derived from ascospores on the resistant cultivar (treatment effect). The dual processes involved in reducing the frequency of virulence in mixtures justified a cultivar-by-cultivar analysis. The effect of the proportion of the cultivar in the mixture was significant for the susceptible cultivar in both years, and for the resistant cultivar only in 2018. This suggests that the intensity of epidemics, which is dependent on climatic conditions in the spring, may account for the observed differences in the magnitude of the mixture effect between years (see the discussion in Orellana-Torrejon et al., 2022a).

A high proportion of the susceptible cultivar in mixtures decreased the frequency of virulent strains derived from ascospores on this cultivar. No significant differences in the frequency of virulent strains on the susceptible cultivar were observed between t2 and t3, for each mixture considered individually. Thus, the selective dynamics established at t2 persisted during the interseason period. The similarity in the frequencies of virulent strains in populations before and after sexual reproduction is consistent with the genetics of *Z. tritici* as a haploid fungus and with Hardy-Weinberg equilibrium, according to which the allele and genotype frequencies in a population remain constant from generation to generation in the absence of other evolutionary forces. However, the frequency of avirulent offspring collected on the susceptible cultivar in mixtures with lower proportions of the resistant cultivar increased sharply around a cultivar proportion (p_c) identified as a potential inflection point (between $p_c = 0.25$ and $p_c = 0.5$ in 2018, and between $p_c = 0.5$ and $p_c = 0.75$ in 2019; blue double arrows in Figure 3a,b, respectively). The gap widened from t2 to t3, highlighting an amplification of the effect of cultivar proportion, which could be an emerging property of mixtures.

Conversely, mixtures enriched the offspring populations in avirulence through sexual reproduction on the resistant cultivar. The frequency of avirulent strains remained low on the resistant cultivar in mixtures after sexual reproduction. This frequency was higher at t3 (11% on average) than at t2 (6% on average), for all mixtures and all years, and this difference was significant for C1A3 in 2018. The frequency of avirulent strains involved in sexual reproduction was actually higher than the frequency estimated at t2 on the basis of

sporulating leaf lesion sampling and was thus higher than expected according to Hardy-Weinberg equilibrium. One possible reason for this difference is that several parental avirulent strains may have been present on the resistant cultivar without causing symptoms, thereby escaping sampling at t2. Avirulent strains may be highly abundant on resistant plants due to splash-dispersed pycnidiospores from susceptible plants, especially in mixtures with a high proportion of the susceptible cultivar (low p_c). Avirulent strains may have participated in sexual reproduction in a cryptic manner, without the generation of asexual fruiting bodies or symptoms. This would be consistent with the larger increase in the frequency of avirulent strains on the resistant cultivar, significantly so for C1A3 in 2018 (10% at t2 vs. 23% at t3), when the epidemic was more intense. This important finding indicates that sexual reproduction led to not only the maintenance of avirulence, but also its enrichment, in the offspring population on resistant plants. The possibility of crossing between an avirulent and a virulent strain on a plant carrying the corresponding resistance gene was demonstrated by Kema et al. (2018) for *Stb6* and by Orellana-Torrejon et al. (2022b) for *Stb16q*. Two biological phenomena may account for the symptomless persistence of one of the two parental strains: (a) the germination of pycnidiospores on the leaf surface, with the ramification and epiphytic growth of hyphae (Fones et al., 2017) or proliferation in the form of blastospores (Francisco et al., 2019); and (b) colonization of the substomatal cavities, with blocking in the leaf tissues before the appearance of symptoms. It is also possible that avirulent strains successfully penetrated the plant tissues and caused symptoms as stowaways coinfecting the plant simultaneously with virulent strains after a systemic induced susceptibility (SIS) reaction (Seybold et al., 2020). This hypothesis is plausible because avirulent isolates were isolated from 3% (24/719) of the sporulating lesions on the resistant cultivar at t1 (Orellana-Torrejon et al., 2022a). These hypotheses were recently explored experimentally under semicontrolled conditions by Orellana-Torrejon et al. (2022b) and some of them were validated.

Another key finding worthy of discussion is the lower aggressiveness of strains collected from wheat residues after sexual reproduction than of those collected from the living plant at the end of the growing season. The mean aggressiveness of the offspring population (t3) was lower than that of both the initial (t1) and late (t2) parental populations, this difference being significant in 2018. This result is of great interest because it is robust, being based on the in planta individual phenotyping of a very large number of strains (>3500), compensating for the small mean size of sporulating areas, as pointed out by Orellana-Torrejon et al. (2022a). Secondly, it increases our empirical knowledge of the impact of (mal)adaptation to the host on the short-term evolutionary trajectory of local *Z. tritici* populations (Morais et al., 2016; Suffert et al., 2018b). This difference concerns the parental population (both t1 and t2) sampled on plants, acting as a fitness selective filter, and also the offspring population consisting of ascospore-derived strains sampled before they infected new wheat plants (i.e., before they were filtered). Moreover, more nonpathogenic strains were sampled in mixtures after sexual reproduction (t3)

than at t₂, confirming that the offspring population was, on average, less adapted to its host than the parental population. This decrease in aggressiveness after sexual reproduction is consistent with the pluriannual dynamics established by Suffert et al. (2018b), even though we did not observe changes in aggressiveness during the growing season between t₁ and t₂. Suffert et al. (2018b) found that strains sampled later in the epidemic were fitter than those sampled at the early stage, and no such increase was observed at the start of the next epidemic. The lower aggressiveness of the offspring population highlighted here confirms the existence of a trade-off between the seasonal (epidemic) and interseasonal (inter-epidemic) periods.

The impact of mixtures on the size of offspring populations is an issue meriting further investigation. We did not highlight an impact on the overall size of the *Z. tritici* ascospore populations (t₃) relative to pure stands. The size of the offspring population was determined by counting the number of ascospores discharged per 1 g of wheat residues (ADI_v), as a proxy for the intensity of sexual reproduction. The variability of the results, due to the limitations of this method (Suffert & Sache, 2011; Suffert et al., 2016, 2018b), together with a significant block effect (Table S1), probably limited our ability to detect an effect in this trial. However, we were able to establish that the intensity of sexual reproduction was significantly higher in 2018 than in 2019. The intensity of epidemics may account for the observed year effect, as weather conditions were more favourable in spring 2018 than in 2019 for disease development through the splash dispersal of pycnidiospores, resulting in a higher disease severity in both the mixtures and the pure stands of the resistant cultivar. We also found that sexual reproduction was significantly more intense on the susceptible cultivar than on the resistant cultivar in pure stands and in C3A1 in 2019. This finding is consistent with previous demonstrations of a positive correlation between the intensity of sexual reproduction in several ascomycete pathogens and disease severity during the growing season, as shown by Cowger et al. (2002) and Suffert et al. (2018a). There are two possible reasons for the absence of such a correlation in this study. First, disease severity was quite low (<30%) at t₂, whereas Suffert et al. (2018a) reported a positive correlation only in semicontrolled conditions in which STB severity ranged from 40% to 80%. Second, the residues from which the intensity of sexual reproduction was estimated in this study consisted of all leaf layers and stems, whereas disease severity at t₂ was estimated from the last three leaf layers only. This difference in the plant material used may have had a major impact, as the wheat tissues playing the greatest role in sexual reproduction are located in the central part of the plant (ascospore production maximal between 25 and 35 cm above the ground; see figure 4 in Suffert et al., 2018a).

We assessed the effect of sexual reproduction on the frequency of virulent strains in each mixture, but we were unable to evaluate the effect on the change in overall population size and in the size of the virulent subpopulation from t₂ to t₃ directly. Indeed, the sizes of the two populations were assessed by means of two different proxies: disease severity, expressed as the percentage of the

leaf area displaying sporulation (assumed to be correlated with the number of pycnidiospores), and the number of ascospores ejected. We highlighted differences in the size of virulent offspring subpopulations: (a) these populations were 10 times larger in 2018 than in 2019; and (b) they were also larger on the susceptible cultivar in mixtures than in pure stands. Given the variability observed with the method for estimating the intensity of sexual reproduction, it seems more relevant to focus on the frequency of virulence than on population size. Our conclusions on the effects of mixtures should be considered with caution because there may be an overall trade-off between size and composition in populations (Orellana-Torrejon et al., 2022a).

In conclusion, the results for the epidemic (Orellana-Torrejon et al., 2022a) and interseason (the current study) periods reveal that two epidemiological processes can account for the efficacy of cultivar mixtures for limiting the virulent fraction of a local *Z. tritici* population over the course of the complete pathogen life cycle in field. The first of these processes is the short-term selection that occurs within a local pathogen population, driven by cross-contaminations between cultivars with splash-dispersed pycnidiospores (the composition of which, in virulent strains, depends on the cultivar of origin). The second process results from changes in the probabilities of physical encounters between avirulent and virulent strains at the late epidemic stage, as a consequence of the first process. We found that this second process is probably based on two mechanisms for decreasing the frequency of virulence in mixtures relative to the resistant pure stands, depending on the cultivar considered in the mixture: (a) a decrease in the frequency of virulent strains on the susceptible cultivar; and (b) more unexpectedly, an enrichment in avirulent strains on the resistant cultivar. These empirical findings confirm that cultivar mixtures are a promising strategy for resistance deployment, not only to limit the intensity of STB epidemics (Kristoffersen et al., 2020), but also to manage the erosion of *Stb* genes through effects on virulence frequencies in local *Z. tritici* populations. This study provides experimental elements for further investigation, by modelling approaches, of the potential of cultivar mixtures as a durable resistance deployment strategy relative to other strategies, as assessed by Rimbaud et al. (2018), for example. In estimations of the impact of key factors, it will be crucial to consider the nature and number of resistance genes, the proportion of each cultivar in the mixture and the frequency of virulences (and their combination, if any) in the local population (Kristoffersen et al., 2021; Vidal et al., 2020). An understanding of the interactions between these factors will clearly require modelling approaches, but also further experimental fungal biology studies in semicontrolled conditions (e.g., Orellana-Torrejon et al., 2022b) to characterize the abovementioned mechanisms in greater detail. The potential impact of resistance deployment strategies, including cultivar mixtures—which may be beneficial, but also detrimental over the years—remain to be fully assessed considering both the size and the genetic diversity of a pathogen population (McDonald & Linde, 2002; McDonald et al., 2022). Our conclusions were drawn at field scale, but it should clearly be borne in mind that the impact of mixtures is diluted at

greater spatial scales when considering inoculum exchanges between fields planted with different cultivars (e.g., Fabre et al., 2015).

ACKNOWLEDGEMENTS

We thank Christophe Montagnier (INRAE Experimental Unit, Thiverval-Grignon, France), Sandrine Gélisse, Nathalie Retout, Laurent Gerard, Nicolas Lecutier, Auriane Pinton, Miléna Bonnard, Jérôme Lageyre, Martin Willigsecker and Benjamin Boudier (INRAE BIOGER, Thiverval-Grignon, France) for technical assistance. We thank Dr Agathe Ballu and Dr Anne-Lise Boixel for their help and advice with the statistical analysis. We thank Dr Julie Sappa for her help correcting our English. This research was supported by a grant from the “Fond de Soutien à l’Obtention Végétale” (FSOV PERSIST project; 2019-2022) and by a PhD fellowship from the French Ministry of Education and Research (MESR) awarded to C.O.-T. for the 2018-2022 period. The BIOGER laboratory also receives support from Saclay Plant Sciences-SPS (ANR-17-EUR-0007).

CONFLICT OF INTEREST

The authors declare that the research was conducted in the absence of any commercial or financial relationships that could be construed as a potential conflict of interest.

DATA AVAILABILITY STATEMENT

The data that support the findings of this study are freely available from the INRAE Dataverse online data repository (<https://data.inrae.fr/>) at <https://doi.org/10.15454/JGWC5A>.

ORCID

Carolina Orellana-Torrejón  <https://orcid.org/0000-0002-8108-8061>

Tiphaine Vidal  <https://orcid.org/0000-0001-8273-3205>

Sébastien Saint-Jean  <https://orcid.org/0000-0002-0401-0711>

Frédéric Suffert  <https://orcid.org/0000-0001-6969-3878>

REFERENCES

- Brown, J.K.M., Chartrain, L., Lasserre-Zuber, P. & Sainetnac, C. (2015) Genetics of resistance to *Zymoseptoria tritici* and applications to wheat breeding. *Fungal Genetics and Biology*, 79, 33–41.
- Brown, J.K.M. & Tellier, A. (2011) Plant-parasite coevolution: bridging the gap between genetics and ecology. *Annual Review of Phytopathology*, 29, 345–367.
- Burdon, J.J. & Laine, A.-L. (2019) *Evolutionary dynamics of plant & pathogen interactions*. Cambridge, UK: Cambridge University Press.
- Chen, R.S. & McDonald, B.A. (1996) Sexual reproduction plays a major role in the genetic structure of populations of the fungus *Mycosphaerella graminicola*. *Genetics*, 142, 1119–1127.
- Cowger, C. & Brown, J.K.M. (2019) Durability of quantitative resistance in crops: greater than we know? *Annual Review of Phytopathology*, 57, 253–277.
- Cowger, C., McDonald, B.A. & Mundt, C.C. (2002) Frequency of sexual reproduction by *Mycosphaerella graminicola* on partially resistant wheat cultivars. *Phytopathology*, 92, 1175–1181.
- Cowger, C. & Mundt, C.C. (2002) Effects of wheat cultivar mixtures on epidemic progression of *Septoria tritici* blotch and pathogenicity of *Mycosphaerella graminicola*. *Phytopathology*, 92, 617–623.
- Dodds, P.N. & Rathjen, J.P. (2010) Plant immunity: towards an integrated view of plant–pathogen interactions. *Nature Reviews Genetics*, 11, 539–548.
- Fabre, F., Rousseau, E., Mailleret, L. & Moury, B. (2015) Epidemiological and evolutionary management of plant resistance: optimizing the deployment of cultivar mixtures in time and space in agricultural landscapes. *Evolutionary Applications*, 8, 919–932.
- Fones, H.N., Eyles, C.J., Kay, W., Cowper, J. & Gurr, S.J. (2017) A role for random, humidity-dependent epiphytic growth prior to invasion of wheat by *Zymoseptoria tritici*. *Fungal Genetics and Biology*, 106, 51–60.
- Fones, H. & Gurr, S. (2015) The impact of *Septoria tritici* blotch disease on wheat: an EU perspective. *Fungal Genetics and Biology*, 79, 3–7.
- Fortune, J.A., Qi, A., Ritchie, F., Dewage, C.S.K., Fitt, B.D.L. & Huang, Y.-J. (2021) Effects of cultivar resistance and fungicide application on stem canker of oilseed rape (*Brassica napus*) and potential interseasonal transmission of *Leptosphaeria* spp. inoculum. *Plant Pathology*, 70, 2115–2124.
- Francisco, C.S., Ma, X., Zwysig, M.M., McDonald, B.A. & Palma-Guerrero, J. (2019) Morphological changes in response to environmental stresses in the fungal plant pathogen *Zymoseptoria tritici*. *Scientific Reports*, 9, 9642.
- Ghaffary, S.M.T., Faris, J.D., Friesen, T.L., Visser, R.G.F., van derLee, T.A.J., Robert, O. et al. (2012) New broad-spectrum resistance to *Septoria tritici* blotch derived from synthetic hexaploid wheat. *Theoretical and Applied Genetics*, 124, 125–142.
- Johnson, R. (1984) A critical analysis of durable resistance. *Annual Review of Phytopathology*, 22, 309–330.
- Kema, G.H.J., Gohari, A.M., Aouini, L., Gibriel, H.A.Y., Ware, S.B., van denBosch, F. et al. (2018) Stress and sexual reproduction affect the dynamics of the wheat pathogen effector AvrStb6 and strobilurin resistance. *Nature Genetics*, 50, 375–380.
- Kristoffersen, R., Bonde Eriksen, L., Cordsen Nielsen, G., Jørgensen, J.R. & Jørgensen, L.N. (2021) Management of *Septoria tritici* blotch using cultivar mixtures. *Plant Disease*, 106, 1341–1349.
- Kristoffersen, R., Heick, T.M., Müller, G.M., Eriksen, L.B., Nielsen, G.C. & Jørgensen, L.N. (2020) The potential of cultivar mixtures to reduce fungicide input and mitigate fungicide resistance development. *Agronomy for Sustainable Development*, 40, 36.
- Lo-Pelzer, E., Aubertot, J.N., David, O., Jeuffroy, M.H. & Bousset, L. (2009) Relationship between severity of blackleg (*Leptosphaeria maculans*/L. *biglobosa* species complex) and subsequent primary inoculum production on oilseed rape stubble. *Plant Pathology*, 58, 61–70.
- McDonald, B.A. & Linde, C. (2002) Pathogen population genetics, evolutionary potential, and durable resistance. *Annual Review of Phytopathology*, 40, 349–379.
- McDonald B.A., Suffert F., Bernasconi A. & Mikaberidze A. (2022) How large and diverse are field populations of fungal plant pathogens? The case of *Zymoseptoria tritici*. *bioRxiv*, [preprint]. <https://doi.org/10.1101/2022.03.13.484150>
- McRoberts, N., Hughes, G. & Madden, L.V. (2003) The theoretical basis and practical application of relationships between different disease intensity measurements in plants. *Annals of Applied Biology*, 142, 191–211.
- Morais, D., Gélisse, S., Laval, V., Sache, I. & Suffert, F. (2016) Inferring the origin of primary inoculum of *Zymoseptoria tritici* from differential adaptation of resident and immigrant populations to wheat cultivars. *European Journal of Plant Pathology*, 145, 393–404.
- Mundt, C.C. (2018) Pyramiding for resistance durability: theory and practice. *Phytopathology*, 108, 792–802.
- Niks, R.E., Parlevliet, J.E., Lindhout, P. & Bai, Y. (2011) *Breeding crops with resistance to diseases and pests*. Wageningen: Wageningen Academic Publishers.
- Numminen, E., Vaumourin, E., Parratt, S.R., Poulin, L. & Laine, A.-L. (2019) Variation and correlations between sexual, asexual and

- natural enemy resistance life-history traits in a natural plant pathogen population. *BMC Evolutionary Biology*, 19, 142.
- Orellana-Torrejon, C., Vidal, T., Boixel, A.-L., Gélisse, S., Saint-Jean, S. & Suffert, F. (2022a) Annual dynamics of *Zymoseptoria tritici* populations in wheat cultivar mixtures: a compromise between the efficacy and durability of a recently broken-down resistance gene? *Plant Pathology*, 71, 289–303.
- Orellana-Torrejon, C., Vidal, T., Gazeau, G., Boixel, A.-L., Gélisse, S. & Lageyre, J. et al., (2022b) Multiple scenarios for sexual crosses in the fungal pathogen *Zymoseptoria tritici* on wheat residues: potential consequences for virulence gene transmission. *bioRxiv*, 2022.02.24.481803 [preprint].
- R Core Team (2012) *R: A language and environment for statistical computing*. Vienna, Austria: R Foundation for Statistical Computing. Available at: <http://www.R-project.org/> [Accessed 26 April 2022].
- Rimbaud, L., Papaix, J., Barrett, L.G., Burdon, J.J. & Thrall, P.H. (2018) Mosaics, mixtures, rotations or pyramiding: What is the optimal strategy to deploy major gene resistance? *Evolutionary Applications*, 11, 1791–1810.
- Sanderson, F. (1972) A *Mycosphaerella* species as the ascogenous state of *Septoria tritici* Rob. and Desm. *New Zealand Journal of Botany*, 10, 707–709.
- Seybold, H., Demetrowitsch, T.J., Hassani, M.A., Szymczak, S., Reim, E., Haueisen, J. et al. (2020) A fungal pathogen induces systemic susceptibility and systemic shifts in wheat metabolome and microbiome composition. *Nature Communications*, 11, 1910.
- Shaw, M.W. & Royle, D.J. (1989) Estimation and validation of a function describing the rate at which *Mycosphaerella graminicola* causes yield loss in winter wheat. *Annals of Applied Biology*, 115, 425–442.
- Suffert, F., Delestre, G., Carpentier, F., Gazeau, G., Walker, A.S., Gélisse, S. et al. (2016) Fashionably late partners have more fruitful encounters: impact of the timing of co-infection and pathogenicity on sexual reproduction in *Zymoseptoria tritici*. *Fungal Genetics and Biology*, 92, 40–49.
- Suffert, F., Delestre, G. & Gélisse, S. (2018a) Sexual reproduction in the fungal foliar pathogen *Zymoseptoria tritici* is driven by antagonistic density dependence mechanisms. *Microbial Ecology*, 77, 110–123.
- Suffert, F., Goyeau, H., Sache, I., Carpentier, F., Gélisse, S., Morais, D. et al. (2018b) Epidemiological trade-off between intra- and interannual scales in the evolution of aggressiveness in a local plant pathogen population. *Evolutionary Applications*, 11, 768–780.
- Suffert, F. & Sache, I. (2011) Relative importance of different types of inoculum to the establishment of *Mycosphaerella graminicola* in wheat crops in north-west Europe. *Plant Pathology*, 60, 878–889.
- Suffert, F., Sache, I. & Lannou, C. (2011) Early stages of *Septoria tritici* blotch epidemics of winter wheat: build-up, overseasoning, and release of primary inoculum. *Plant Pathology*, 60, 166–177.
- Vidal, T., Boixel, A.-L., Durand, B., deVallavieille-Pope, C., Huber, L. & Saint-Jean, S. (2017) Reduction of fungal disease spread in cultivar mixtures: Impact of canopy architecture on rain-splash dispersal and on crop microclimate. *Agricultural and Forest Meteorology*, 246, 154–161.
- Vidal, T., Saint-Jean, S., Lusley, P., Leconte, M., Krifa, S.B., Boixel, A.L. et al. (2020) Cultivar mixture effects on disease and yield remain despite diversity in wheat height and earliness. *Plant Pathology*, 69, 1148–1160.
- Yuen, J.E. & Andersson, B. (2013) What is the evidence for sexual reproduction of *Phytophthora infestans* in Europe? *Plant Pathology*, 62, 485–491.

SUPPORTING INFORMATION

Additional supporting information may be found in the online version of the article at the publisher's website.

How to cite this article: Orellana-Torrejon, C., Vidal, T., Saint-Jean, S. & Suffert, F. (2022) The impact of wheat cultivar mixtures on virulence dynamics in *Zymoseptoria tritici* populations persists after interseason sexual reproduction. *Plant Pathology*, 00, 1–13. Available from: <https://doi.org/10.1111/ppa.13577>